



# CLINICAL AND RESEARCH FACULTY DIRECTORY 2026



**Weill Cornell  
Medicine**  
Pathology &  
Laboratory Medicine

**NewYork-Presbyterian**  
Weill Cornell Medical Center

**NewYork-Presbyterian**  
Lower Manhattan Hospital

**NewYork-Presbyterian**  
Brooklyn Methodist Hospital

**NewYork-Presbyterian**  
Queens



**2026 WEILL CORNELL MEDICINE  
PATHOLOGY AND LABORATORY MEDICINE  
FACULTY**

# New York-Presbyterian Weill Cornell Medicine



## **Massimo Loda, MD**

David D. Thompson Professor & Chair  
Pathology and Laboratory Medicine  
Weill Cornell Medicine  
Pathologist-in-Chief  
New York Presbyterian Hospital  
Weill Cornell Campus  
[weillcornell.org/massimo-loda-md](http://weillcornell.org/massimo-loda-md)



## **Melissa Cushing, MD**

Executive Vice Chair for Clinical Affairs  
Director of the Clinical Laboratories  
Transfusion Medicine and Cellular Therapy  
Daniel M. Knowles, M.D. Distinguished  
Professor in Pathology and Laboratory  
Medicine  
[weillcornell.org/mcushing](http://weillcornell.org/mcushing)



## **Margaret Harrison, MHA**

Chief Administrative Officer  
[directory.weill.cornell.edu/person/profile/  
mhg4002](http://directory.weill.cornell.edu/person/profile/mhg4002)

## ANATOMIC PATHOLOGY



**BRIAN ROBINSON, M.D.**  
**VICE CHAIR FOR ANATOMIC PATHOLOGY**  
[weillcornell.org/brobinson](http://weillcornell.org/brobinson)

## AUTOPSY PATHOLOGY



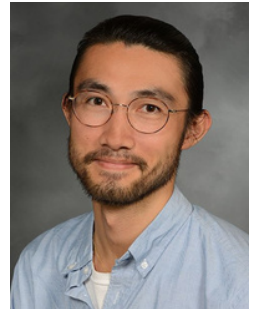
**DAVID PISAPIA,**  
**M.D., CHIEF**  
[weillcornell.org/dpisapia](http://weillcornell.org/dpisapia)



**STEVEN**  
**SALVATORE,**  
**M.D.**  
[weillcornell.org/ssalvatore](http://weillcornell.org/ssalvatore)



**SAPNA**  
**DESAI, M.D., CHIEF**  
[weillcornell.org/sapna-desai-md](http://weillcornell.org/sapna-desai-md)

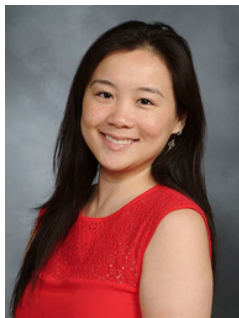


**HANSEN LAM,**  
**M.D.**  
[weillcornell.org/hansen-lam-md](http://weillcornell.org/hansen-lam-md)

## BREAST PATHOLOGY



**BARIS**  
**BOYRAZ,**  
**M.D., PH.D.**  
[weillcornell.org/baris-boyraz-dr-md-phd](http://weillcornell.org/baris-boyraz-dr-md-phd)



**ESTHER**  
**CHENG, D.O.**  
[weillcornell.org/esther-cheng-do](http://weillcornell.org/esther-cheng-do)



**LAURA C.**  
**COLLINS, M.B.B.S.,**  
**CHIEF**  
[weillcornell.org/laura-c-collins-md](http://weillcornell.org/laura-c-collins-md)



**SANDRA**  
**DEMARIA, M.D.**  
[weillcornell.org/sandra-demaria-md](http://weillcornell.org/sandra-demaria-md)

# ANATOMIC PATHOLOGY

## BREAST PATHOLOGY, *continued*



**AMI PATEL, M.D.**  
[weillcornell.org/ami-patel-md](http://weillcornell.org/ami-patel-md)



**ANDY PHAN, M.D.**  
[weillcornell.org/andy-phan-md](http://weillcornell.org/andy-phan-md)

## CYTOPATHOLOGY



**ROBERT  
BURKHARDT, M.D.**  
[weillcornell.org/robert-thomas-burkhardt-md](http://weillcornell.org/robert-thomas-burkhardt-md)



**ABHA GOYAL, M.D.**  
[weillcornell.org/abha-goyal-md](http://weillcornell.org/abha-goyal-md)



**JONAS HEYMANN, M.D.**  
[weillcornell.org/jonas-john-heyman-md](http://weillcornell.org/jonas-john-heyman-md)



**JOSE SCARPA  
CARNIELLO, M.D.**  
[weillcornell.org/jose-scarpa-carniello-md](http://weillcornell.org/jose-scarpa-carniello-md)



**MOMIN SIDDIQUI, M.D.**  
**CHIEF**  
[weillcornell.org/momin-siddiqui-md](http://weillcornell.org/momin-siddiqui-md)

# ANATOMIC PATHOLOGY

## DERMATOPATHOLOGY



**CYNTHIA MAGRO, M.D.**  
**DIRECTOR**  
[weillcornell.org/cmagro](http://weillcornell.org/cmagro)



**MARTA TORRES-  
QUINONES, M.D.**  
[weillcornell.org/marta-torres-quinones-md](http://weillcornell.org/marta-torres-quinones-md)



**XUAN WANG,  
M.D., PH.D.**  
[weillcornell.org/  
xuan-wang-md-phd](http://weillcornell.org/xuan-wang-md-phd)

## GASTROINTESTINAL AND LIVER PATHOLOGY



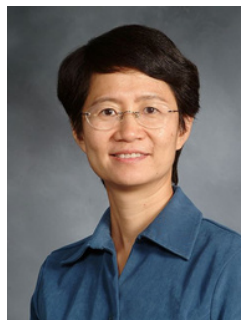
**ERIKA PATEL, M.D.**  
[weillcornell.org/erika-patel-md](http://weillcornell.org/erika-patel-md)



**JOSE JESSURUN, M.D.**  
[weillcornell.org/jjessurun](http://weillcornell.org/jjessurun)



**NICOLE  
PANARELLI, M.D.**  
**CHIEF**  
[weillcornell.org/  
ncpanarelli](http://weillcornell.org/ncpanarelli)



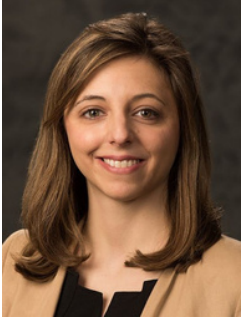
**LIHUI QIN, M.D., Ph.D.**  
[weillcornell.org/lihuiqin](http://weillcornell.org/lihuiqin)



**ANNIKA WINDON, M.D.**  
[weillcornell.org/annika-widon-md](http://weillcornell.org/annika-widon-md)

# ANATOMIC PATHOLOGY

## GENITOURINARY PATHOLOGY



**FRANCESKA  
KHANI, M.D.**  
[weillcornell.org/  
fkhani](http://weillcornell.org/fkhani)



**MASSIMO  
LODA, M.D.**  
**Chair**  
[weillcornell.org/  
massimo-loda-md](http://weillcornell.org/massimo-loda-md)



**JUAN MIGUEL  
MOSQUERA,  
M.D., CO-CHIEF**  
[weillcornell.org/  
jmmosquera](http://weillcornell.org/jmmosquera)



**BRIAN  
ROBINSON,  
M.D., CHIEF**  
[weillcornell.org/  
brobinson](http://weillcornell.org/brobinson)



**JENNY TU,  
M.D., PH.D.**  
[weillcornell.org/jiangling-  
jenny-tu-bm-phd](http://weillcornell.org/jiangling-jenny-tu-bm-phd)

## GYNECOLOGICAL PATHOLOGY



**BARIS BOYRAZ,  
M.D., PH.D.**  
[weillcornell.org/baris-boyraz-  
dr-md-phd](http://weillcornell.org/baris-boyraz-dr-md-phd)



**ABHA GOYAL, M.D.**  
[weillcornell.org/abha-goyal-md](http://weillcornell.org/abha-goyal-md)



**NINA SCHATZ-  
SIEMERS, D.O.**  
[weillcornell.org/nina-felice-  
schatz-siemers-do](http://weillcornell.org/nina-felice-schatz-siemers-do)



**JENNY TU,  
M.D., PH.D.**  
[weillcornell.org/jiangling-  
jenny-tu-bm-phd](http://weillcornell.org/jiangling-jenny-tu-bm-phd)



**ANNA YEMELYANOVA,  
M.D. CHIEF**  
[weillcornell.org/anna-  
yemelyanova-md](http://weillcornell.org/anna-yemelyanova-md)

# ANATOMIC PATHOLOGY

## HEAD AND NECK/ ENDOCRINE PATHOLOGY



**THERESA  
SCOGNAMIGLIO, M.D.,  
CHIEF**  
[weillcornell.org/tscognamiglio](http://weillcornell.org/tscognamiglio)

## NEUROPATHOLOGY



**BENJAMIN L.  
LIECHTY, M.D.**  
[weillcornell.org/benjamin-liechty-md](http://weillcornell.org/benjamin-liechty-md)



**DAVID PISAPIA, M.D.  
CHIEF**  
[weillcornell.org/dpisapia](http://weillcornell.org/dpisapia)

## PERINATAL AND OBSTETRIC PATHOLOGY



**NINA SCHATZ-  
SIEMERS, D.O.**  
[weillcornell.org/nina-felice-schatz-siemers-do](http://weillcornell.org/nina-felice-schatz-siemers-do)



**JENNY TU, M.D., PH.D.**  
[weillcornell.org/jiangling-jenny-tu-bm-phd](http://weillcornell.org/jiangling-jenny-tu-bm-phd)

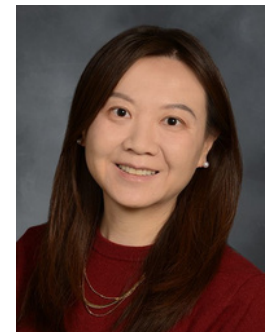
## RENAL PATHOLOGY



**STEVEN  
SALVATORE, M.D.**  
[weillcornell.org/ssalvatore](http://weillcornell.org/ssalvatore)



**SURYA SESHAN, M.D.,  
CHIEF**  
[weillcornell.org/svseshan](http://weillcornell.org/svseshan)



**YIHE YANG, M.D.**  
[weillcornell.org/yihe-yang-md](http://weillcornell.org/yihe-yang-md)

# ANATOMIC PATHOLOGY

## THORACIC PATHOLOGY



**JOSE JESSURUN,**  
M.D.

[weillcornell.org/jjessurun](http://weillcornell.org/jjessurun)



**MAELLA SALIBA, M.D., CHIEF**

[weillcornell.org/maelle-saliba-md](http://weillcornell.org/maelle-saliba-md)



## HEMATOPATHOLOGY



**GIORGIO INGHIRAMI, M.D.**  
**VICE CHAIR FOR HEMATOPATHOLOGY**  
[weillcornell.org/ginghirami](http://weillcornell.org/ginghirami)

## IMMUNOPATHOLOGY



**PAUL BARONE, M.D.**  
[weillcornell.org/paul-dylan-barone-md](http://weillcornell.org/paul-dylan-barone-md)



**AMY CHADBURN, M.D.**  
[weillcornell.org/achadburn](http://weillcornell.org/achadburn)



**MADHU OUSEPH,  
M.D., PH.D.**  
[weillcornell.org/madhu-m-ouseph-md-phd](http://weillcornell.org/madhu-m-ouseph-md-phd)



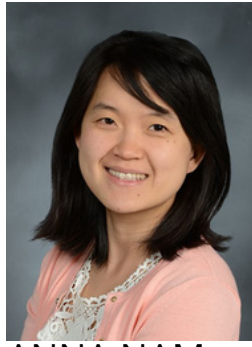
**SANJAY PATEL,  
M.D., MPH**  
[weillcornell.org/sanjaypatel](http://weillcornell.org/sanjaypatel)

# HEMATOPATHOLOGY

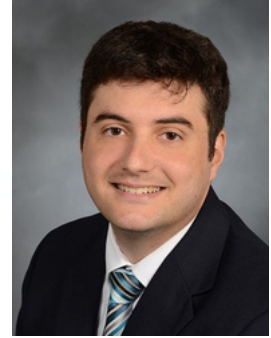
## MOLECULAR HEMATOPATHOLOGY, *continued*



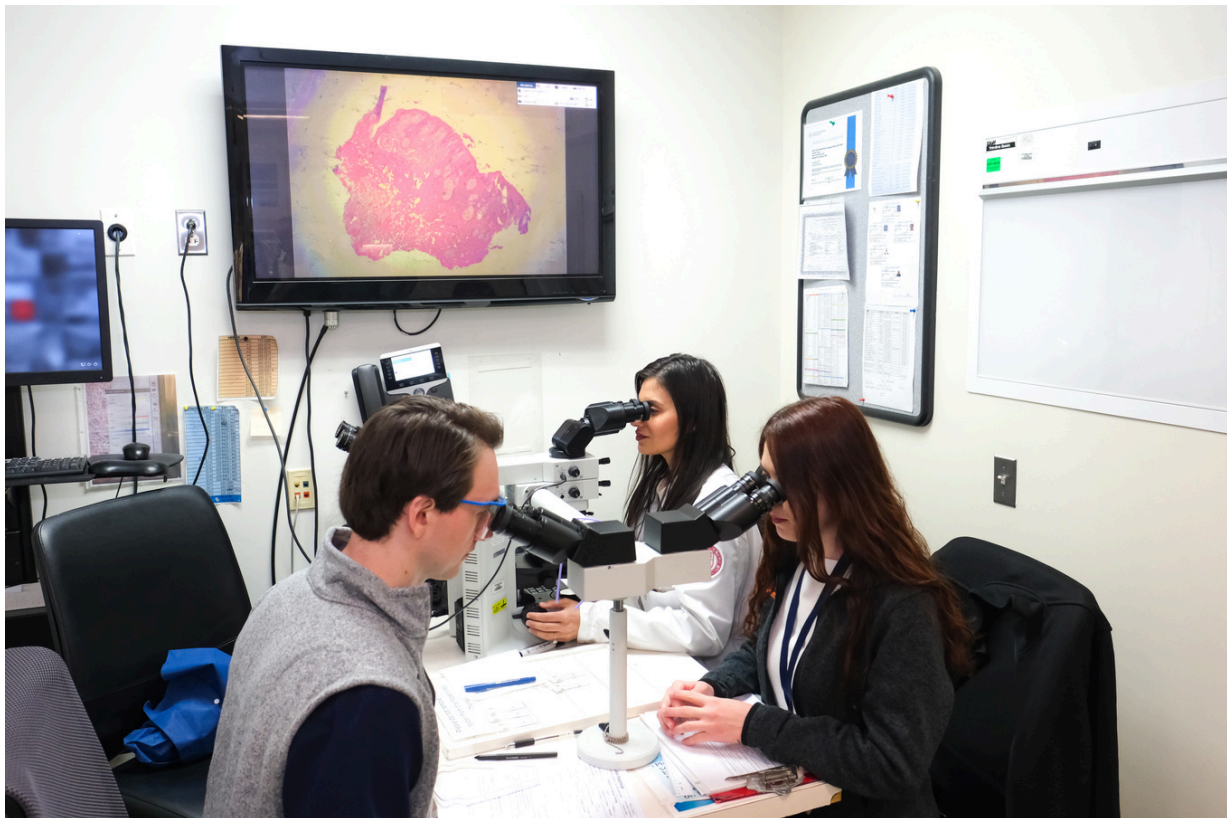
ETHEL CESARMAN,  
M.D., PH.D.  
[weillcornell.org/ecesarman](http://weillcornell.org/ecesarman)



ANNA NAM,  
M.D.  
[weillcornell.org/  
seung-nam-md](http://weillcornell.org/seung-nam-md)



JAMES SOLOMON,  
M.D., PH.D.  
[weillcornell.org/james-  
patrick-solomon-phd-md](http://weillcornell.org/james-patrick-solomon-phd-md)



# LABORATORY MEDICINE AND MOLECULAR PATHOLOGY

 **New York-Presbyterian**  
Weill Cornell Medical Center



**NEAL LINDEMAN, M.D.**  
**VICE CHAIR FOR LABORATORY MEDICINE**  
[weillcornell.org/neal-lindeman-md](http://weillcornell.org/neal-lindeman-md)

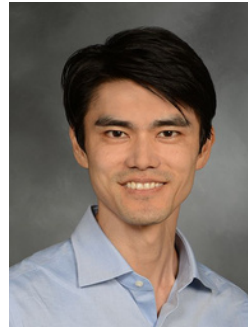
## CENTRAL LABORATORY



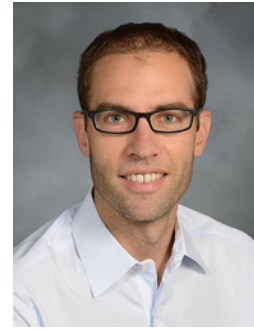
**AMY CHADBURN,**  
**M.D.**  
[weillcornell.org/achadburn](http://weillcornell.org/achadburn)



**MATTHEW**  
**GREENBLATT,**  
**M.D., PH.D.**  
[weillcornell.org/magreenblatt](http://weillcornell.org/magreenblatt)



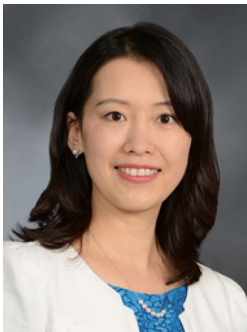
**KENJI**  
**IKEMURA, M.D.**  
[weillcornell.org/kenji-ikemura-md](http://weillcornell.org/kenji-ikemura-md)



**BENJAMIN**  
**KLEAVLAND,**  
**M.D., PH.D.**  
[weillcornell.org/benjamin-kleavland-md-phd](http://weillcornell.org/benjamin-kleavland-md-phd)



**SABRINA RACINE-**  
**BRZOSTEK, M.D., PH.D.**  
[weillcornell.org/sabrina-racine-brzostek-md-phd](http://weillcornell.org/sabrina-racine-brzostek-md-phd)



**SARINA YANG,**  
**M.D., PH.D.**  
[weillcornell.org/he-sarina-yang-phd](http://weillcornell.org/he-sarina-yang-phd)



**ZHEN ZHAO, PH.D.**  
**DIRECTOR**  
[weillcornell.org/zhen-zhao-phd](http://weillcornell.org/zhen-zhao-phd)

# LABORATORY MEDICINE AND MOLECULAR PATHOLOGY

## CLINICAL MICROBIOLOGY



**LARS  
WESTBLADE,  
PH.D.,  
DIRECTOR**  
[weillcornell.org/  
lwestblade](http://weillcornell.org/lwestblade)

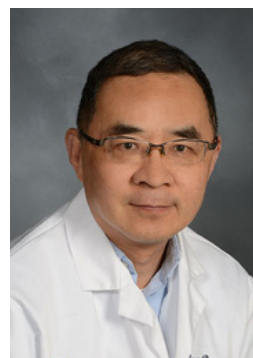


**JEFFREY  
KUBIAK,  
M.D.**  
[weillcornell.org/  
jeffrey-kubiak-md](http://weillcornell.org/jeffrey-kubiak-md)



**JAMIE  
MARINO, PH.D.**  
[weillcornell.org/  
jamie-marino-phd](http://weillcornell.org/jamie-marino-phd)

## CYTOGENETICS

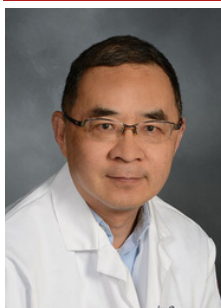


**LIMING BAO,  
MD., PH.D  
DIRECTOR**  
[weillcornell.org/  
liming-bao-md-  
phd](http://weillcornell.org/liming-bao-md-phd)



**MADHULATHA  
PANTRANGI,  
PH.D.**  
[weillcornell.org/  
madhu-pantrangi-  
phd](http://weillcornell.org/madhu-pantrangi-phd)

## MOLECULAR AND GENOMIC PATHOLOGY



**LIMING BAO,  
MD., PH.D.**  
[weillcornell.org/  
liming-bao-md-phd](http://weillcornell.org/liming-bao-md-phd)



**ETHEL CESARMAN,  
M.D., PH.D.**  
[weillcornell.org/ecesarman](http://weillcornell.org/ecesarman)



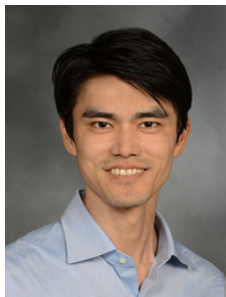
**PAOLO COTZIA,  
M.D.**  
[weillcornell.org/paolo-  
cotzia-md](http://weillcornell.org/paolo-cotzia-md)



**ERIKA  
PATEL, M.D.**  
[weillcornell.org /  
erika-patel-md](http://weillcornell.org/erika-patel-md)

# LABORATORY MEDICINE AND MOLECULAR PATHOLOGY

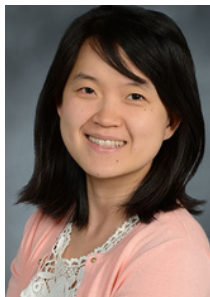
## MOLECULAR AND GENOMIC PATHOLOGY--continued



**KENJI  
IKEMURA, M.D.**  
[weillcornell.org/kenji-ikemura-md](http://weillcornell.org/kenji-ikemura-md)



**NEAL  
LINDEMAN, M.D.**  
[weillcornell.org/neal-lindeman-md](http://weillcornell.org/neal-lindeman-md)



**ANNA NAM, M.D.**  
[weillcornell.org/seung-nam-md](http://weillcornell.org/seung-nam-md)



**MADHU OUSEPH,  
M.D., PH.D.**  
[weillcornell.org/madhu-m-ouseph-md-phd](http://weillcornell.org/madhu-m-ouseph-md-phd)



**MADHULATHA  
PANTRANGI,  
PH.D.**  
[weillcornell.org/madhu-pantrangi-phd](http://weillcornell.org/madhu-pantrangi-phd)



**JAMES SOLOMON,  
M.D., PH.D.,  
DIRECTOR,  
MOLECULAR  
HEMPATHOLOGY**  
[weillcornell.org/james-patrick-solomon-phd-md](http://weillcornell.org/james-patrick-solomon-phd-md)



**PRIYA VELU,  
M.D., PH.D.,  
DIRECTOR,  
MOLECULAR  
PATHOLOGY**  
[weillcornell.org/priya-d-velu-md-phd](http://weillcornell.org/priya-d-velu-md-phd)



**ANNA  
YEMELYANOVA,  
M.D.**  
[weillcornell.org/anna-yemelyanova-md](http://weillcornell.org/anna-yemelyanova-md)

# LABORATORY MEDICINE AND MOLECULAR PATHOLOGY

 **New York-Presbyterian**  
Weill Cornell Medical Center

## TRANSFUSION MEDICINE AND CELLULAR THERAPY



**SCOTT  
AVECILLA,  
M.D., PH.D.**  
[weillcornell.org/scott-  
t-avecilla-md-phd](http://weillcornell.org/scott-t-avecilla-md-phd)



**TOBIAS COHEN,  
M.D., PH.D.**  
[weillcornell.org/tobias-  
cohenmd-phd-9480](http://weillcornell.org/tobias-cohenmd-phd-9480)



**MELISSA  
CUSHING, M.D.**  
**DIRECTOR**  
[weillcornell.org/  
mcushing](http://weillcornell.org/mcushing)



**ROBERT  
DESIMONE, M.D.**  
[weillcornell.org/robert-a-  
desimone-md](http://weillcornell.org/robert-a-desimone-md)



**ALEXANDRA  
JIMENEZ, M.D.**  
[weillcornell.org/  
alexandra-jimenez-md](http://weillcornell.org/alexandra-jimenez-md)



**SABRINA RACINE-  
BRZOSTEK, M.D., PH.D.**  
[weillcornell.org/sabrina-racine-  
brzostek-md-phd](http://weillcornell.org/sabrina-racine-brzostek-md-phd)

# LABORATORY MEDICINE AND MOLECULAR PATHOLOGY

 **New York-Presbyterian**  
Weill Cornell Medical Center

## CANCER AND CELL PATHOBIOLOGY



**JORGE MOSCAT, PH.D.**  
**VICE CHAIR FOR CANCER AND CELL PATHOBIOLOGY**  
<https://vivo.weill.cornell.edu/display/cwid-jom4010>



**NICHOLAS  
BRADY, PH.D.**  
[vivo.weill.cornell.edu/  
display/cwid-njb2003](https://vivo.weill.cornell.edu/display/cwid-njb2003)



**ETHEL CESARMAN,  
M.D., PH.D.**  
[weillcornell.org/ecesarman](https://weillcornell.org/ecesarman)



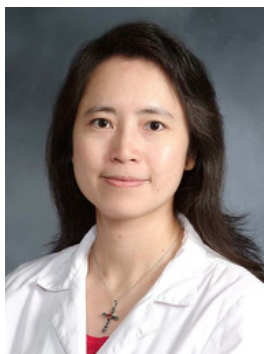
**SELINA CHEN-  
KIANG, PH.D.**  
[vivo.weill.cornell.edu/  
display/cwid-sckiang](https://vivo.weill.cornell.edu/display/cwid-sckiang)



**MARIA DIAZ-  
MECO, PH.D.**  
[vivo.weill.cornell.edu/  
display/cwid-mtd4001](https://vivo.weill.cornell.edu/display/cwid-mtd4001)



**ANNARITA  
DI LORENZO,  
PH.D.**  
[vivo.weill.cornell.edu/  
display/cwid-and2039](https://vivo.weill.cornell.edu/display/cwid-and2039)



**NANCY DU, PH.D.**  
[vivo.weill.cornell.edu/display/  
cwid-nad2012](https://vivo.weill.cornell.edu/display/cwid-nad2012)



**MATTHEW  
GREENBLATT,  
M.D., PH.D.**  
[vivo.weill.cornell.edu/  
display/cwid-mag3003](https://vivo.weill.cornell.edu/display/cwid-mag3003)



**TAN INCE,  
M.D., PH.D.**  
[vivo.weill.cornell.edu/  
display/cwid-tai9015](https://vivo.weill.cornell.edu/display/cwid-tai9015)

# LABORATORY MEDICINE AND MOLECULAR PATHOLOGY

 **New York-Presbyterian**  
Weill Cornell Medical Center

## CANCER AND CELL PATHOBIOLOGY, *continued*



**GIORGIO  
INGHIRAMI, M.D.**  
[vivo.weill.cornell.edu/  
display/cwid-ggi9001](http://vivo.weill.cornell.edu/display/cwid-ggi9001)



**STEVEN  
JOSEFOWICZ, PH.D.**  
[vivo.weill.cornell.edu/display/  
cwid-szj2001](http://vivo.weill.cornell.edu/display/cwid-szj2001)



**BENJAMIN  
KLEAVELAND,  
M.D., PH.D.**  
[vivo.weill.cornell.edu/  
display/cwid-bek9059](http://vivo.weill.cornell.edu/display/cwid-bek9059)



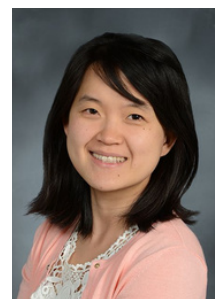
**MASSIMO LODA,  
M.D., CHAIR**  
[vivo.weill.cornell.edu/  
display/cwid-mal4005](http://vivo.weill.cornell.edu/display/cwid-mal4005)



**ANTONIO  
MARZIO, PH.D.**  
[vivo.weill.cornell.edu/  
display/cwid-anm4031](http://vivo.weill.cornell.edu/display/cwid-anm4031)



**JORGE  
MOSCAT, PH.D.**  
[vivo.weill.cornell.edu/display/  
cwid-jom4010](http://vivo.weill.cornell.edu/display/cwid-jom4010)

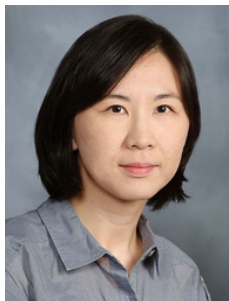


**ANNA S. NAM, M.D.**  
[vivo.weill.cornell.edu/display/  
cwid-shn9035](http://vivo.weill.cornell.edu/display/cwid-shn9035)

# LABORATORY MEDICINE AND MOLECULAR PATHOLOGY

 **New York-Presbyterian**  
Weill Cornell Medical Center

## CANCER AND CELL PATHOBIOLOGY, *continued*



**JI-HYE PAIK,**  
PH.D.

[vivo.weill.cornell.edu/  
display/cwid-jep2025](http://vivo.weill.cornell.edu/display/cwid-jep2025)



**DAVID RICKMAN,**  
PH.D.

[vivo.weill.cornell.edu/  
display/n6544](http://vivo.weill.cornell.edu/display/n6544)



**TERESA SANCHEZ,**  
PH.D.

[vivo.weill.cornell.edu/  
display/cwid-tes2015](http://vivo.weill.cornell.edu/display/cwid-tes2015)



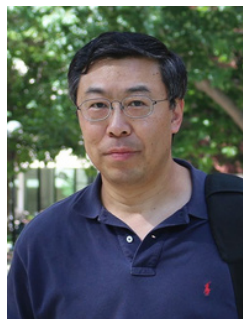
**ANDREA SBONER,**  
PH.D.

[vivo.weill.cornell.edu/  
display/cwid-ans2077](http://vivo.weill.cornell.edu/display/cwid-ans2077)



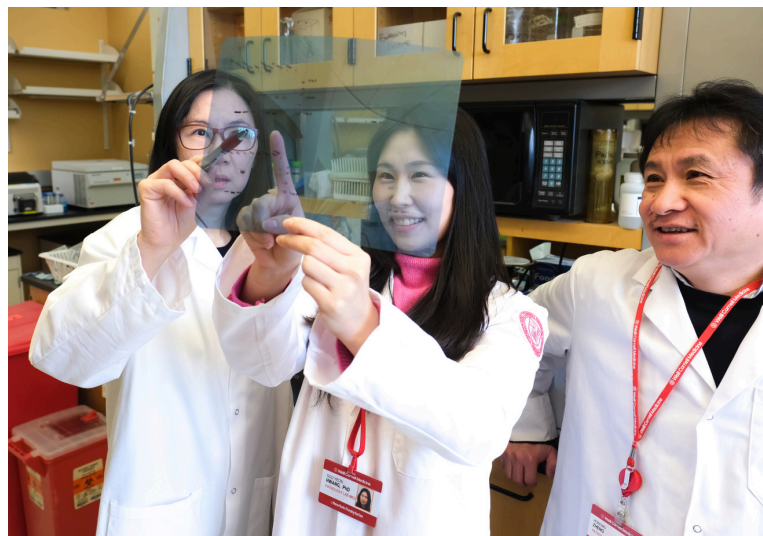
**JESSICA  
TYLER, PH.D.**

[vivo.weill.cornell.edu/  
display/cwid-jet2021](http://vivo.weill.cornell.edu/display/cwid-jet2021)



**PENGBO  
ZHOU, PH.D.**

[vivo.weill.cornell.edu/  
display/cwid-pezh2001](http://vivo.weill.cornell.edu/display/cwid-pezh2001)



# LABORATORY MEDICINE AND MOLECULAR PATHOLOGY

 **New York-Presbyterian**  
Weill Cornell Medical Center

## COMPUTATIONAL AND SYSTEMS PATHOLOGY



**LUIGI MARCHIONNI, M.D., PH.D**  
**VICE CHAIR FOR COMPUTATIONAL  
AND SYSTEMS PATHOLOGY**  
[vivo.weill.cornell.edu/display/cwid-lum4003](http://vivo.weill.cornell.edu/display/cwid-lum4003)



## EDUCATION



DOMENICK FALCONE, PH.D.  
Assistant Dean of Foundational  
Curriculum  
[vivo.weill.cornell.edu/display/cwid-  
dfalcone](http://vivo.weill.cornell.edu/display/cwid-dfalcone)



MATTHEW GREENBLATT, M.D., PH.D.  
Associate Director of Pathology  
Residency Training Program  
[weillcornell.org/magreenblatt](http://weillcornell.org/magreenblatt)

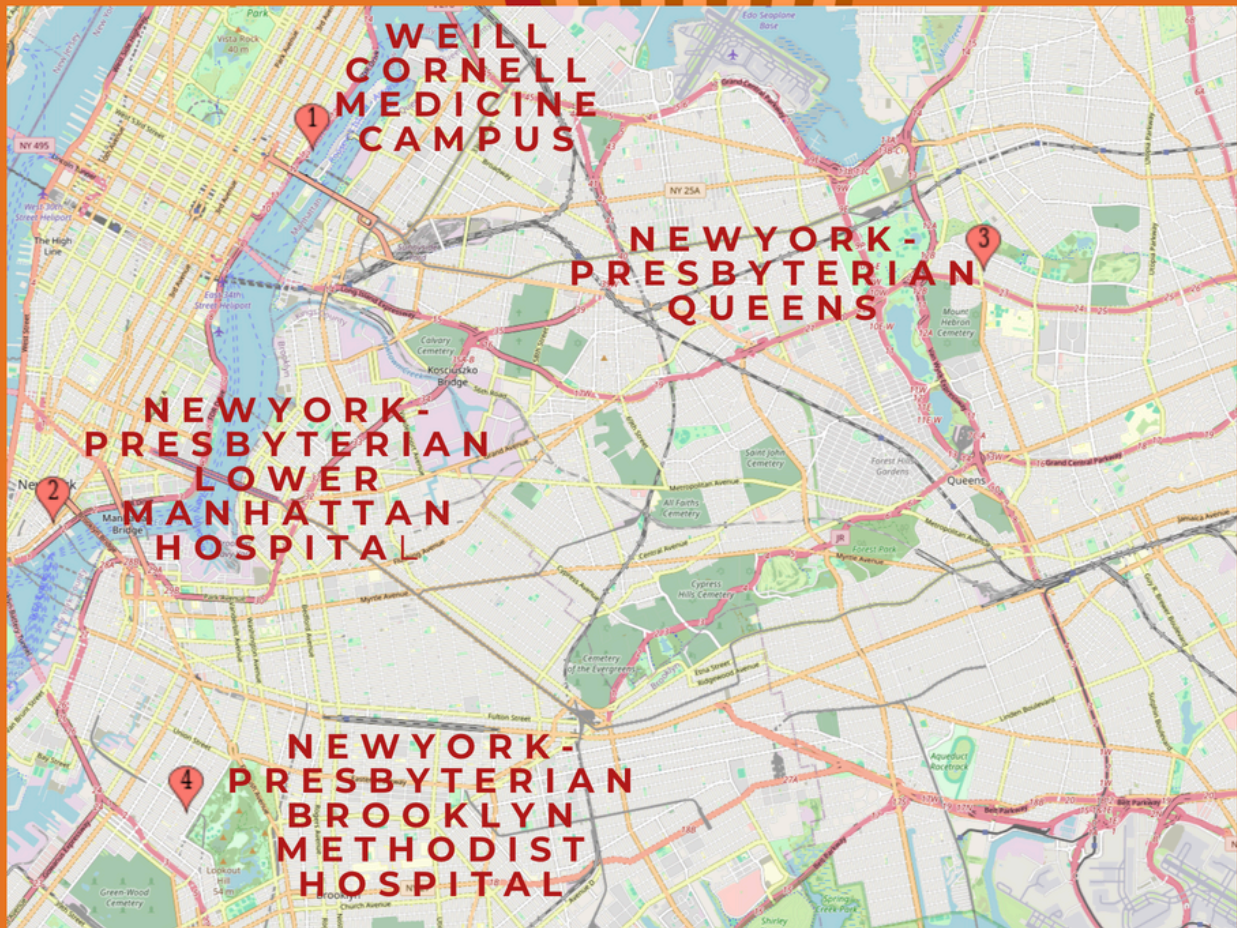


NICOLE PANARELLI, M.D.  
Vice Chair of Education and  
Faculty Development  
[weillcornell.org/ncpanarelli](http://weillcornell.org/ncpanarelli)



STEVEN P. SALVATORE, M.D.  
Director, Pathology Residency  
Training Program  
[weillcornell.org/ssalvatore](http://weillcornell.org/ssalvatore)

# THE WEILL CORNELL SPHERE OF REGIONAL HOSPITALS



1. Weill Cornell Medicine main campus
2. NewYork-Presbyterian Lower Manhattan Hospital
3. NewYork-Presbyterian Queens
4. NewYork-Presbyterian Brooklyn Methodist Hospital

# NewYork-Presbyterian Lower Manhattan Hospital

**NewYork-  
Presbyterian**  
Lower Manhattan  
Hospital



**THERESA SCOGNAMIGLIO, M.D.**  
**CHIEF OF SURGICAL PATHOLOGY**  
[weillcornell.org/tscognamiglio](http://weillcornell.org/tscognamiglio)



**STACIA SEMPLE, M.D.**  
**MEDICAL DIRECTOR OF THE LABORATORIES**  
[weillcornell.org/stacia-semple-md](http://weillcornell.org/stacia-semple-md)



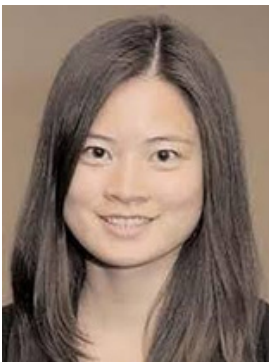
**YING ZHANG, M.D., PH.D.**  
[weillcornell.org/ying-zhang-bm-phd](http://weillcornell.org/ying-zhang-bm-phd)



**WILLIAM RODGERS, M.D., PH.D.**  
[weillcornell.org/william-harry-rodgers-jr-phd-md](http://weillcornell.org/william-harry-rodgers-jr-phd-md)



**ESTHER CHENG, D.O.**  
[weillcornell.org/esther-cheng-do](http://weillcornell.org/esther-cheng-do)



**FLORENCE L. LOO, M.D.**  
[weillcornell.org/florence-loo-md](http://weillcornell.org/florence-loo-md)

# NewYork-Presbyterian Brooklyn Methodist Hospital



**TAN INCE, M.D., PH.D.**  
**CHIEF**

[weillcornell.org/tan-a-ince-md-phd](http://weillcornell.org/tan-a-ince-md-phd)



**RYAN DES JEAN, M.D.**

[weillcornell.org/ryan-des-jean-md](http://weillcornell.org/ryan-des-jean-md)



**CATHY FAN, M.D.**

[weillcornell.org/cathy-fan-md](http://weillcornell.org/cathy-fan-md)



**CHERYL GOSS, M.D.**

[weillcornell.org/chgoss](http://weillcornell.org/chgoss)

**NewYork-Presbyterian  
Brooklyn Methodist Hospital**



LAWRENCE KISS, M.D.  
[weillcornell.org/lawrence-kiss-md](http://weillcornell.org/lawrence-kiss-md)



DANIEL LEVITAN, M.D.  
[weillcornell.org/daniel-levitan-md](http://weillcornell.org/daniel-levitan-md)



EMILY STORCH, M.D.  
[weillcornell.org/emily-storch-md](http://weillcornell.org/emily-storch-md)



MESUT TOPAK, M.D.  
[weillcornell.org/mesut-toprak-md](http://weillcornell.org/mesut-toprak-md)

## **NEWYORK-PRESBYTERIAN/WEILL CORNELL MEDICINE**

### **ANATOMIC PATHOLOGY**

- **AUTOPSY PATHOLOGY**
- **BREAST PATHOLOGY**
- **CYTOPATHOLOGY**
- **DERMATOPATHOLOGY**
- **GASTROINTESTINAL AND LIVER PATHOLOGY**
- **GENITOURINARY PATHOLOGY**
- **GYNECOLOGICAL PATHOLOGY**
- **HEAD AND NECK/ENDOCRINE PATHOLOGY**
- **NEUROPATHOLOGY**
- **PERINATAL AND OBSTETRIC PATHOLOGY**
- **RENAL PATHOLOGY**
- **THORACIC PATHOLOGY**
- **SURGICAL PATHOLOGY**

### **HEMATOPATHOLOGY**

- **IMMUNOPATHOLOGY**
- **MOLECULAR HEMATOPATHOLOGY**

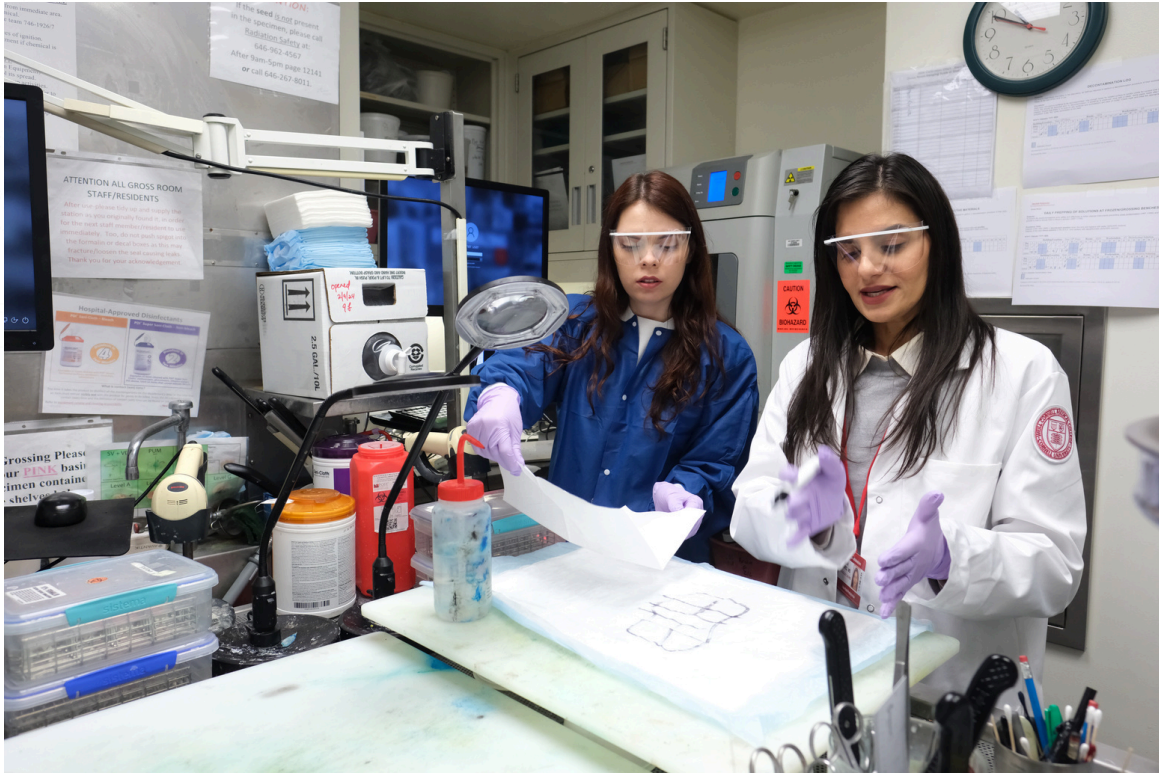
### **LABORATORY MEDICINE AND MOLECULAR PATHOLOGY**

- **CENTRAL LABORATORY**
- **CLINICAL MICROBIOLOGY**
- **CYTOGENETICS**
- **MOLECULAR AND GENOMIC PATHOLOGY**
- **TRANSFUSION MEDICINE AND CELLULAR THERAPY**

### **CANCER AND CELL PATHOBIOLOGY**

### **COMPUTATIONAL AND SYSTEMS PATHOLOGY EDUCATION**

**NEWYORK-PRESBYTERIAN LOWER MANHATTAN HOSPITAL**  
**NEWYORK-PRESBYTERIAN BROOKLYN METHODIST HOSPITAL**  
**NEWYORK-PRESBYTERIAN QUEENS**



**Website: [pathology.weill.cornell.edu](http://pathology.weill.cornell.edu)**

**X/Twitter: [@WCMCPathology](https://twitter.com/WCMCPathology)**

**Facebook: <https://www.facebook.com/WCMPathology>**

**Instagram: <https://www.instagram.com/wcmpathology/>**

**Threads: <https://www.threads.com/@wcmpathology>**

**Bluesky: <https://bsky.app/profile/wcmcpathology.bsky.social>**



**Weill Cornell  
Medicine**

**Pathology &  
Laboratory Medicine**